

ARRIVAL STUDENTS VS I

Performance 1				
Arrival theater	Class day	Class time	Class	Teacher
09:30	01 Monday	16:15	Selectie A	Lucy
09:30	01 Monday	17:15	Urban	Lucy
09:30	01 Monday	18:15	Selectie C / D	Lucy
09:30	02 Tuesday	18:00	Klassiek ballet	Anna
11:00	03 Wednesday	14:45	Pre-ballet 1	Mathilde
09:45	03 Wednesday	15:30	Pre-ballet 2	Mathilde
09:30	03 Wednesday	17:00	Klassiek ballet	Mathilde
09:30	03 Wednesday	18:00	Klassiek ballet	Lucy
09:30	04 Thursday	16:45	Klassiek ballet	Eva
09:30	04 Thursday	17:45	Klassiek ballet	Eva
09:45	05 Friday	14:00	Pre-ballet 2	Kim
09:45	05 Friday	14:45	Streetdance	Kim
11:00	06 Saturday	09:45	Pre-ballet 1	Robin
09:45	06 Saturday	10:30	Pre-ballet 2	Robin
09:30	06 Saturday	11:15	Pre-ballet 3	Robin
09:30	06 Saturday	12:15	Klassiek ballet	Robin

START PERFORMANCE 1 - 13:30 UUR





PICK-UP POINTS STUDENTS VS I



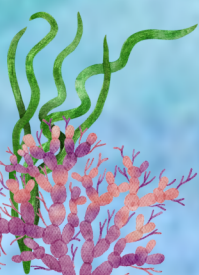
After the performance, it will take about 20 to 25 minutes for the first groups to be ready.

Ophaal punt	Les dag	Class time	Class	Teacher
STAGE	03 Wednesday	14:45	Pre-ballet 1	Mathilde
RED	03 Wednesday	15:30	Pre-ballet 2	Mathilde
RED	05 Friday	14:00	Pre-ballet 2	Kim
RED	05 Friday	14:45	Streetdance	Kim
STAGE	06 Saturday	09:45	Pre-ballet 1	Robin
BLUE	06 Saturday	10:30	Pre-ballet 2	Robin
BLUE	06 Saturday	11:15	Pre-ballet 3	Robin
BLUE	06 Saturday	12:15	Klassiek ballet	Robin

The groups below remain for performance 2



Class day	Class time	Class	Teacher
01 Monday	16:15	Selectie A	Lucy
01 Monday	17:15	Urban	Lucy
01 Monday	18:15	Selectie C / D	Lucy
02 Tuesday	18:00	Klassiek ballet	Anna
03 Wednesday	17:00	Klassiek ballet	Mathilde
03 Wednesday	18:00	Klassiek ballet	Lucy
04 Thursday	16:45	Klassiek ballet	Eva
04 Thursday	17:45	Klassiek ballet	Eva



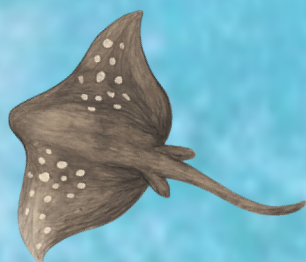
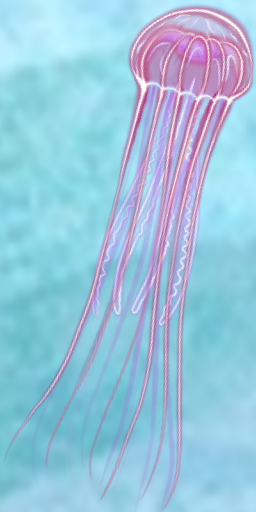
ARRIVAL STUDENTS VS 2



PERFORMANCE 2

Arrival theater	Class day	Class time	Class	Teacher
14:45	02 Tuesday	17:00	Dansmix	Robin
14:45	03 Wednesday	13:45	Klassiek ballet	Mathilde
14:45	03 Wednesday	16:15	Pre-ballet	Mathilde
14:45	04 Thursday	15:45	Klassiek ballet	Eva
14:45	05 Friday	15:45	Pre-ballet	Kim
14:45	05 Friday	16:45	Klassiek ballet	Kim
14:45	06 Saturday	13:15	Klassiek ballet	Robin

START PERFORMANCE 2 - 17:15 UUR





PICK-UP POINTS STUDENTS VS 2

After the performance, it will take about 20 to 25 minutes for the first groups to be ready.

Ophaal punt	Class day	Class time	Class	Teacher
BLUE	01 Monday	16:15	Selectie A	Lucy
RED	01 Monday	17:15	Urban	Lucy
RED	01 Monday	18:15	Selectie C / D	Lucy
RED	02 Tuesday	17:00	Dansmix	Robin
RED	02 Tuesday	18:00	Klassiek ballet	Anna
BLUE	03 Wednesday	13:45	Klassiek ballet	Mathilde
BLUE	03 Wednesday	16:15	Pre-ballet	Mathilde
BLUE	03 Wednesday	17:00	Klassiek ballet	Mathilde
RED	03 Wednesday	18:00	Klassiek ballet	Lucy
BLUE	04 Thursday	15:45	Klassiek ballet	Eva
BLUE	04 Thursday	16:45	Klassiek ballet	Eva
RED	04 Thursday	17:45	Klassiek ballet	Eva
BLUE	05 Friday	15:45	Pre-ballet	Kim
BLUE	05 Friday	16:45	Klassiek ballet	Kim
BLUE	06 Saturday	13:15	Klassiek ballet	Robin